

KOL SHOLOM

The voice of
Temple Beth Sholom San Leandro Hebrew Congregation
Since 1886

The **KOL SHOLOM** is published by Temple Beth Sholom for its Congregants.
All articles for the September/October 2011 edition are due by 8/3/11.
The September/October 2011 edition will be distributed on 9/1/11.

Send articles to: kolsholom@tbssanleandro.org or rc3429@aol.com or
mail them to the TBS office, to the attention of the Editor.



No-Frills Interim Editor-in-Chief – Rita Cohen
Proofreader – Eleanor Tandowsky

Contributors – Rabbi, Cantor, TBS President, Marvin Zinn, Rinat Manhoff,
Edna Vaknin, Eleanor Tandowsky, Sisterhood President,
Heidi Kolden, JP Popoff, Wendy Sachs, Sophie Miron, Bernice West, Jennifer
Jones Horton, Event Chairpersons, Oneg Chair, Gavri Loeb,
Congregants (**See your name in lights.....**)

Rabbi Harry A. Manhoff, Ph.D.

Cantor Linda Hirschhorn, M.A.,
M.F.C.C.

Edna S. Vaknin, Preschool
Program Director

Rinat Manhoff, Director of
Education

Rita Cohen, President,
Temple Beth Sholom

Dolores Evans, Business
Manager

Temple Beth Sholom

642 Dolores Avenue, San Leandro, CA 94577
Phone: 510.357.8505 Fax: 510.357-1375
www.tbssanleandro.org

Office Hours

Monday	8:30 a.m. to 12:30 p.m.
Tuesday & Wednesday	8:30 a.m. to 3:30 p.m.
Thursday	2:00 p.m. to 4:00 p.m.
Friday	Closed

Sabbath Services

Friday Evening Worship 8:00 p.m. in the Main Sanctuary
(except for the first Friday of each month -
Service begins at 6:30 p.m.)
Saturday Morning Torah Study from 9:00 a.m. to 10:00 a.m.
in the Little Shul
Saturday Morning Worship from 10:00 a.m. to Noon
in the Little Shul

School Locations and Hours

Torah & Hebrew School location schedule:

✧ 9/12/10 to 10/26/10	Shir Ami
✧ 10/31/10 to 1/25/11	Temple Beth Sholom
✧ 1/30/11 to 3/22/11	Shir Ami
✧ 3/27/11 to 5/24/11	Temple Beth Sholom

Torah School on Sunday from 9:30 a.m. to Noon

Hebrew School on Tuesday from 4:00 p.m. to 6:00 p.m.

Preschool Monday through Friday from 7:30 a.m. to 6:00 p.m.



Table of Contents

Kol Sholom Staff	1
Temple Info	1
Rabbi Message ..	2
Kudo's Corner	3
Constitution & By-Laws...	3
Israeli Field Hospital	4
President Message	5
Preschool News	5
Board in Brief	6-8
Use of Language	9-10
Calendar, Holidays ..	10-13
Superfan	13
From the Editor.....	14
Advertise in Kol	14
eScrip	14
Remodel	15
Library News	16
Adult Education	16
How to Donate	16
Donations Made	17-18
Tree of Life	19
Memorial Plaques	19
Oneg Sponsors	20
1 st Fri Night Sponsors ..	20
Thanks	21
HHD Services	22

Message From The Rabbi

Summer time and the living is easy! Easy? Have you looked around the synagogue lately? Immediately when you arrive at Temple Beth Sholom you are greeted in the front and the back with new pavement, a beautiful and smooth concrete patio in the front and a repaved and re-stripped parking lot in the back. If you look a little more carefully, you will see a new door from the patio to the old Slater Memorial Library. (When everything is said and done, the Slater Memorial Library & Weinreb Learning Center will return to the first floor.) And if you look carefully in the back you will notice a new walkway from the parking lot to the back doors. (There should be much better drainage and no puddles or broken, dangerous cracks on the walkway.) And an especially critical eye will notice ramps making the sanctuary, Zucker Hall and Slater Memorial Library & Weinreb Learning Center accessible to everyone.

On the inside of the building there have been exciting changes as well. Besides the three new bathrooms on the first floor, (a Women's, a Men's and a separate Preschool bathroom),

there is a modern, new phone system. There are new ADA approved doors into and throughout the building. The updated electrical system means that Zucker Hall has light switches for the first time in the nearly fifteen years that I have been here. (In the past we had to turn lights on and off from the circuit breakers on the stage.) We have also added outlets throughout the building. In the 1950s there were far fewer electrical appliances. Now we need outlets for computers, music players, televisions with DVD and video players, fans, heaters, etc, etc. In the classrooms upstairs are more new outlets, new Boys' and Girls' bathrooms, and wireless access. We are removing some of the old accordion walls and making a bigger space for the Torah and Preschools.

During the remodel we have all worked together and made some adjustments. All of our services were held in the Little Shul and we all had to share the bathrooms in the Little Shul. We could not always use the kitchen either because the entire preschool has moved into Zucker Hall while the remodeling makes crossing the classroom hallway impossible, or because the doorway to the outside has been consistently blocked by construction vehicles. The new phone system has been a little complicated and we are still learning more about it. The computers are faster but only after a series of adjustments and secondary routers were placed into service. Other little adjustments have been made with the electrical and the heating all which seem more stressful at the time then they really are. In the end it will all be more than worth it and we will look back at the little annoyances with smiles and not just a little relief.

Summer time and the living *is* easy! Sure it is! And 5772 will be a great new start for us.

Rabbi Harry A. Manhoff, PHD

KUDO's Corner

THANK YOU ALL FOR YOUR EFFORTS AT TEMPLE BETH SHOLOM

No matter what you did or how often, every effort helps make Temple Beth Sholom a great community **We Salute You**

Rabbi Ruth Adar	Vicki Hudson	Diane Schoenfeld
Amy & Mike Adelson	Dorene Jackson	Leslie Schoenfeld
Miles Adler	Deborah Jacobson	Armida & Dr. Harley Schultz
Deborah Aitken	Jennifer & Barry Jones Horton	Sondra Schwartz
Heidi Amster	Walter Kahn	Charlotte & Arthur Seideman
Irene Amster	Hannah Kolden	Loretta Siegel
Ursula Batz	Heidi & Steven Kolden	Wesley Siegel
David Ben-Yaacov	Katherine Kolden	Alan Michael & Jennifer Silverman
BJ Borris & Arlene Hazelkorn	Kathy Krohn	Yo'at Silverman
Helen Brenner	Richard Lapin	Bobbie Skiles
Donna Bruckner	Molly Larabee	David Slavin
Carol & Dan Buchalter	Manny Lateiner	Dorothy Sole
Jonathan Buchalter	Dr. Ellen Levine	Eve Stone
Sue & Norm Burg	Duvid Lipovitch	Eleanor Tandowsky
Barbara Cassuto	Gavri Loeb	Mara Tandowsky
Jonathan Cohen	Miriam Loeb	Nathan Tandowsky
Rita & Oziel Cohen	Dan Maisler	Lois Tanner
Leonard Cooper	Rabbi Harry & Barbara Manhoff	Gerry & Milt Toorans
Judy Eisenberg	Merle Manning	Aryeh Trupin
Dolores Evans	Adrienne Mannis	Edna & Jacob Vaknin
Marlene & Larry Fingerut	Sophie Miron & Jawxillion Loeb	Amanda & Dorinda Vassigh
Joia Fishman	Barbara & Herb Nagel	Djalal Vassigh
Audray & Jerry Gardner	Rachel Osias	Carolyn Vollmer
Mimi Gohlke	Lydia & Dr. Gary Osias	Anita Wah & Alan Fishman
Aviva & Rafael Gonzalez	Anita Osofsky	Gloria & Ben Warwick
Joseph Gorelick	Regina Osofsky	Ilene Weinreb & Sam Mesnick
Ellen Gould	Robin Padilla	Roz Weiss & family
James Grindlinger	Erlida Parker	Dr. Deborah & Sagiv Weiss-Ishai
Rita Hammer	Ruth & Ron Phillips	Kat Wellman
Laury Gabay Harroch	Febra & JP Popoff	Bernice & Bill West
Fran Herts	Cheryl Redmond	Andreas Wittenstein
Cantor Linda Hirschhorn	Wendy Sachs	Mimi & Marvin Zinn

A grand thank you to Heidi Kolden, Roz Weiss, Fran Herts, JP & Febra Popoff, and Eleanor Tandowsky for hosting recent onegs. We really appreciate your efforts.

The TBS Board of Directors has completed its proposed revision to the **Temple's Constitution and By-Laws**. If you have an email address, you have already received a copy of the proposed version. Since this document is too long to print copies for everyone, we have made two versions available in the Temple lobby. The first version shows ~~red-strikethrough~~ text for deletions, [blue underlined](#) for new text. Unchanged text is black. The second version only shows what it will look like if the changes are approved by the congregation on June 22nd at the Congregational Meeting. If you haven't reviewed the proposed version yet, please do so before the meeting. At that time we will only be answering questions and then voting.

ISRAELI FIELD HOSPITAL IN JAPAN CARRIES ON INSPIRING WORK

by Catherine Porter

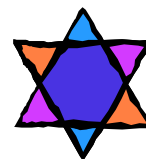
<http://www.thestar.com/news/world/article/969049--porter-Israeli-field-hospital-carries-on-inspiring-work-in-japan>

Three days after the earthquake leveled Port-au-Prince last year, a foreign medical team set up a hospital in a soccer field with equipment and supplies unheard of in the rest of the broken city — an X-ray machine, a blood lab, an ultrasound and two incubators for babies who were born prematurely to traumatized mothers. Now, at the cusp of Japan's ground zero, where a whole village was dragged out to sea, the same foreign team has erected seven medical buildings. Equipped with many of the same supplies used by the team in Haiti, they are helping hundreds of survivors. Your guess: the medical team comes from the United States? France? Canada? No. Israel. "Forty countries around the world approached Japan and offered their (medical) assistance. We were the only ones to come," Dr. Ofer Merin told me by phone from the remains of Minami-Sanriku, seven hours north of Tokyo. "It's a real privilege."

Merin is a cardiac surgeon at Jerusalem's Shaare Zadek hospital. He is also the chief of the field hospital for the Israeli Defense Force's reserve unit. The field hospital, he told me, is on call for national emergencies and since 1979, has traveled internationally on emergency humanitarian missions. Japan is their 12th mission. "If you drop our group in the middle of a desert we can work," says Merin, who spent two years in Toronto a decade ago, working at Sunnybrook hospital. I heard about the Israeli hospital in Port-au-Prince, but never saw it. It was mythical — while around most of the city, local and foreign doctors were reduced to civil war-era surgeries, cutting off infected legs with razor blades and no anesthetic, the Israelis offered their patients respirators and blood transfusions in specialized tent wards. A CBS reporter called it "the Rolls-Royce of emergency medical care." It was the first foreign field hospital on the ground — landing in the middle of the night three days after the Jan. 12 quake, and operating six hours later. Over the next 10 days, the medical team treated 1,100 patients and conducted 242 surgeries. The situation is very different in Japan, Merin said. Arriving a couple weeks after a four-storey wall of water swept away more than half of Minami-Sanriku's 16,000 people, the 50-member medical team isn't dealing with emergencies. Instead they've set up a clinic with expertise not easily found in rural Japan — gynecology, urology, pediatrics, ophthalmology. Given the gasoline shortage, an obstetrical team has been visiting pregnant women in the scattered emergency shelters, ultrasound in hand. One of Merin's colleagues, Dr. David Raveh, writes movingly in his blog about the director of the town's old-age home who appeared at the clinic with her Japanese doctor, two weeks after the receding wave sucked at her legs. "What strength she had, to overcome the wild shearing force of waves, holding onto a pole," he writes. She thought nothing of the cuts on her legs, tending instead to the elderly residents. Now her jaw and neck were tense, her doctor told him. "I cut him short after his second sentence, my eyes widening. Tetanus, I said decisively to her doctor. "To each of these patients, the Israelis' presence must offer some solace. But the greater work being done is diplomatic, Merin says. "There was a law in Japan that stated non-Japanese people were not allowed to treat the Japanese on their ground," Merin says. "Hopefully, this will open their minds, that countries should assist one another." The Israeli mission follows the Jewish concept of tikkun olam — to repair the world. But Merin has his own personal reasons for helping. In 1942, the Nazis entered a Polish village and loaded the Jews onto boxcars bound for the gas chambers at Auschwitz. Sensing their impending doom, one couple slipped their 8-year-old son off the train. A Catholic woman living in one village over hid him in her cupboard for 18 months. "Once the war ended, he got out and eventually went to Israel. He got married and had three sons. I'm the second," said Merin, 50, who has four children of his own now. "In the Talmud it says, if you save one life, it's like saving the entire world."



PRESIDENT'S MESSAGE



June/July/August 2011

B"H

Iyar, Sivan, Tammuz, Elul 5771

Dear Fellow Congregants,

The Congregational Meeting is scheduled for Wednesday, June 22, 2011 at 6:30 p.m. We are going to have a buffet dinner of sandwiches, salad, fruit, and juice at 6:30 p.m. We can eat while the meeting is in session. We have lots of important issues facing the community and we need everyone to participate. To maximize our time, we are going to post several reports instead of hearing a verbal report. You will still have an opportunity ask pointed questions about those reports.

We also need folks to help us re-vamp our website www.tbssanleandro.org. We have ideas but we need someone savvy with marketing and software and website skills. Please contact Sophie Miron to volunteer.

B'Shalom,

Rita

rc3429@aol.com

510.523.5180 home

✧ or drop me a line at the Temple

BETH SHOLOM PRESCHOOL NEWS

**by Edna S. Vaknin, Director
Beth Sholom Preschool**



Dear Temple Beth Sholom Families,

We all had a wonderful Spring Break! When we came back to the temple and school, we were quite surprised to find out that so much progress was made in the remodeling, especially in our backyard!

In order to ensure the safety of our preschoolers, we relocated all classrooms to the Zucker Hall, and I designated an area for each age group. To my surprise, the kids found this arrangement very exciting and we've enjoyed a very easy transition.

On May 10th we will be celebrating Israel Independence Day. We'll set up activity stations and the kids will experience Israeli culture and life through hands-on activities. If you have a young child, you're welcome to join us!

In the beginning of June we will celebrate Shavuot. One of my favorite Shavuot stories is about many mountains having an argument regarding which mountain will have the privilege to have the Torah given on him. Each mountain says, "I am the best", "I am the tallest", "I am the prettiest". Nonetheless, Hashem chose Har Sinai because he didn't show off--he was humble. This is a great story that shows the kids how important it is to be respectful, friendly, and modest! Wishing everyone a great summer!



Board Minutes in Brief for the 4/13/11 Meeting

A. Temple Beth Shalom Congregational Meeting 6/22/11 agenda (Buffet Dinner of sandwiches, salad, fruit, and juice will be available at 6:30 p.m. We can eat while the meeting is in session.)

1. Rabbi's Invocation
2. Nominations and Elections

	Outgoing Board	Incoming Board
President	Rita Cohen	Rita Cohen
Immediate Past President	Heidi Kolden	Heidi Kolden
1 st Vice President	Sophie Miron	Sophie Miron
2 nd Vice President	Kat Wellman	Kat Wellman
Treasurer	Jerry Gardner	Jerry Gardner
Secretary	Lydia Osias	Lydia Osias
Trustee	Vicki Hudson	
Trustee	Lydia Osias	Lydia Osias
Trustee	Wendy Sachs	Wendy Sachs

3. Revisions to Constitution and ByLaws - Answer questions only, then vote
4. Finance
 - (a) Budget (b) Fargo Senior Center (c) Remodel finances
 - (d) Endowments (e) Dues
5. New Business **from the floor**
6. **Posted** Reports

Revisions to Constitution and ByLaws	Remodel Status Report
Outgoing President's Report	Library
Rabbi's Report	Outreach (Membership and Publicity)
Cantor's Report	Camp Kadima
Upcoming Events	Education
Maintenance and Building Issues	Shir Sholom Religious School
Sisterhood	Adult Education
Safety and Emergency Preparedness Report	Preschool

B. Rabbi's Report

1. New telephone system installed. Training to be completed.
2. Shabbat in Little Shul successful.
3. Attended very interesting Passover program at Patten College.

C. Education Report

1. Shir Sholom Torah School conducted the Amazing Seder Race with tasks all over the Temple related to Passover. Great fun had by all. Ended school early to go to Genocide Walk but due to event conflict at Shir Ami, only the Popoff's were able to attend.
2. Preschool Report - none
3. Adult Education
 - ✧ Kuzari workshop now has 7 students.
 - ✧ Will be starting a Spinoza group Thursday or Friday mornings.
4. Camp Kadima. Heidi Kolden is their new Administrative Assistant. She works at Beth Emek.

Board Minutes in Brief for the 4/13/11 Meeting (continued)

D. Remodel

1. Agreed to make the 6/18/11 Annual Gala a benefit for the Remodel Fund.
2. Grant writing motion unanimously approved: **Any member of the congregation who writes a grant for Temple that produces revenue may receive 10% of the proceeds once the award has been received by the Temple.** If you are interested in pursuing this task, please contact Rita Cohen so we don't duplicate efforts.
3. A meeting to be arranged to proceed with personal solicitations.
4. Asbestos wrap on plumbing in restrooms. Calls for 2nd abatement and clean air test. [Editor's note: hazardous material has been safely removed and we passed the clean air test.]
5. Timers in parking lot need to be replaced, perhaps with motion detectors.

E. Fargo Senior Center

1. Meeting cancelled to observe Passover.
2. Christian Church Homes discussed repairs they are making, i.e., the lighting.
3. Signed agreement for sale. \$20,000 in escrow. Anticipate deal done in 18 months.

F. Outreach (Publicity and Membership)

1. Committee membership critical. Volunteers please.
2. Facebook account will be updated.
3. Website –request to congregation for volunteer.
4. Activities Sat, 5/7/11, 6:30 pm - Yom Ha'Atzma'ut Celebration Havdalah service, dinner, folk dancing – **THIS EVENT POSTPONED**

G. Sisterhood Report – Judaica Shop demolished. 99% of inventory in storage under the stairs. Basic inventory (i.e., candles, Kipot) in office available for sale. Cookbooks returned to office. Cantor's CDs returned to her.

H. Maintenance – Jacob Vaknin hired to complete a long list of repairs around Temple. Paid for by the Remodel Fund. Jacob is doing a great job.

I. Publicity - Last year's wording re TBS in the *RESOURCE, A Guide to Jewish Life in the Bay Area* was approved, as is, 3/31/11.

J. Annual Gala 6/18/11 - to benefit the Remodel Fund.

K. Fundraising (misc events)

Gold & Silver Sale	\$213.00
Aluminum cans	\$10.80
Scrap Metal	\$177.25
3/4/11 dinner and Zimriyah	\$342.84
Mishloach Manot Plates (Remodel Fund)	<u>\$716.00</u>
total	\$1,459.89

L. Calendar - April and May dates not repeated here.

Respectfully submitted, Rita Cohen



Board Minutes in Brief for the 5/11/11 Meeting

1. Call to Order at 7:30 pm
2. Approval of Minutes from previous meeting – not reviewed
3. Financial Report

a. Treasurer's Report 30-Apr-11

	Budget 8/1/10-7/31/11	YTD	Prior YTD
Income	269,580	258,216	183,055
Expenses	303,553	225,712	224,861
Results	(33,973)	32,504	(41,806)
Note: Numbers in parentheses are negative			

b. Remodeling Committee

1. personal solicitation campaign. **Sunday, June 5, 2011 at 10:30 am in the Little Shul. All Board members and the Remodel Committee.**
2. finances (\$130,000 from remodel fund to BSM Construction, \$41,000 from Morgan Stanley credit line to BSM Construction)
3. grants (business plan, remodeling plan, fundraising plan to include with grants)

4. Nomination Committee Report

	<u>Outgoing Board</u>	<u>Incoming Board</u>
President	Rita Cohen	Rita Cohen
Immediate Past President	Heidi Kolden	Heidi Kolden
1 st Vice President	Sophie Miron	Sophie Miron
2 nd Vice President	Kat Wellman	Kat Wellman
Treasurer	Jerry Gardner	Jerry Gardner
Secretary	Lydia Osias	Lydia Osias
Trustee	Vicki Hudson	
Trustee	Lydia Osias	Lydia Osias
Trustee	Wendy Sachs	Wendy Sachs

5. Reports for the Congregational Meeting 6/22/11 discussed and assigned
6. Rabbi Report. 5/17/11 Jewish Heritage Night. Rabbi getting 10 tickets for TBS. Sent an automated telephone message.
7. Cantor Report. Learned after the meeting: 3-CD set is ready, only waiting for the graphics to be done.
8. Adult Education Report – New Spinoza class on Friday from 9:00 am to 10:00 am beginning 5/27/11 in the Little Shul.
9. Fargo Senior Center Report. Meeting next week. Lighting improved. Vacancy rate is down to 1 or 2 – which is good. The sale is progressing. It took longer to do their inspections than expected but they are now ready to move on to the next step.

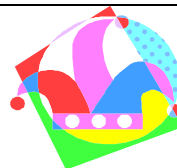
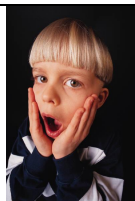
Meeting adjourned at 8:30 pm

Respectfully submitted,

Rita Cohen

Use of Language

Reported by Marvin Zinn



Oy Vey.....

Jewbilation

(n.) Pride in finding out that one's favorite celebrity is Jewish or that your offspring is marrying a Jewish person.

Torahfied

(n.) Inability to remember one's lines when called to read from the Torah at one's Bar or Bat Mitzvah (or from the Haggadah at Passover).

Matzilation

(v.) Smashing a piece of matzoh to bits while trying to butter it.

Chutzpapa

(n.) A father who wakes his wife at 4:00 a.m. so she can change the baby's diaper.

Deja Nu

(n.) Having the feeling you've seen the same exasperated look on your mother's face, but not knowing exactly when.

Disoriyenta

(n.) When Aunt Linda gets lost in a department store and strikes up a conversation with everyone she passes.

Hebort

(v.) To forget all the Hebrew one ever learned immediately after one's Bar or Bat Mitzvah.

Jewdo

(n.) A traditional form of self-defense based on talking one's way out of a tight spot.

Rosh Hashana-na-na

(n.) A rock 'n roll band from Brooklyn.

Yidentify

(v.) To be able to determine Jewish origins of celebrities, even though their names might be St. John, Curtis, Davis, or Taylor.

Minyastics

(n.) Going to incredible lengths and troubles to find a tenth person to complete a Minyan.

Feelawful

(n.) Indigestion from eating Israeli street food, especially falafel.

Dis-kvellified

(v.) To drop out of law school, med. school or business school as seen through the eyes of parents, grandparents and Uncle Sid. In extreme cases, simply choosing to major in art history when Irv's son David is majoring in biology is sufficient grounds for diskvellification.

Impasta

(n.) A Jew who starts eating leavened foods before the end of Passover.

Kinders Shlep

(v.) To transport other kids besides yours in your car.

Schmuckluck

(n.) Finding out one's wife became pregnant after one had a vasectomy.

Use of Language (continued)

Mamatzah Balls

(n.) Matzo balls that are as good as your mother used to make.

Meinstein

Slang, "My son, the genius!"

Mishpochadots

(n.) The assorted lipstick and make-up stains found on one's face and collar after kissing all one's aunts and cousins at a reception.

Re-shtetlement

(n.) Moving from Brooklyn to Boca Raton and finding all your old neighbors live in the same condo building as you.

Shofarsogut

(n.) The relief you feel when, after many attempts, the Shofar is finally blown at the end of Yom Kippur.

Trayffic Accident

(n.) An appetizer one finds out has pork.

Bubbegum

(n.) Candy one's mother gives to her grandchildren that she never gave to her own children.



Gavri Loeb becomes Bar Mitzvah
March 26, 2011 (20 Adar II)

Jennifer and Barry are cooking up a storm.
Join their cooking series at Temple Beth Sholom. Each class is \$35 with limited spaces.

- June 14: BBQ
- July 12: Potatoes
- August 30: Stone Fruits
- September 13: Breakfasts
- October 11: Thanksgiving Menu
- November 8: Winter Holiday Menus
- December 13: Lucky New Years Menu
- January 10: Winter Squashes
- Feb 14: 2nd Annual Aphrodisiac menu
- March 13: Sauces

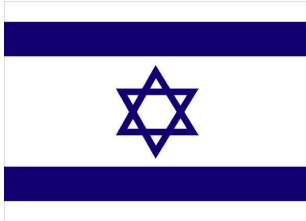


Contact Jennifer or Barry at
joneshorton08@gmail.com.

Calendar of Events and Holidays		
	June 2011	National Safety Month
Wed	6/1/11	Yom Yerushalayim
Fri	6/3/11, 6:30 pm service, 7:15 pm dinner	Family Shabbat Service and Dinner cancelled due to construction
Tues	6/7/11	Erev Shavuot
Wed	6/8/11	Shavuot
Wed	6/8/11	Preschool closed
Thurs	6/9/11	Yizkor, Shavuot
Thurs	6/9/11	Preschool closed
Tues	6/14/11 at 6pm, TBS kitchen	Jones-Horton Cooking Class: BBQ
Wed	6/15/11, 7:15 pm Little Shul	TBS Board Meeting
Sat	6/18/11, 6pm	Annual TBS Gala
Sun	6/19/11	Father's Day
Wed	6/22/11 at 6:30 pm	Bi-Annual Congregational Meeting.
Thurs	6/30/11, 5:30 pm	Preschool Graduation and End of Year Party
Fri	7/1/11, 6:30 pm service, 7:15 pm dinner	Family Shabbat Service and Dinner
Fri	7/1/11	Preschool closed
Mon	7/4/11	Independence Day
Mon- Fri	7/4/11-7/8/11	Preschool closed
Mon	7/11/11	Preschool Summer Program Begins
Tues	7/12/11 at 6pm, TBS kitchen	Jones-Horton Cooking Class: Potatoes
Wed	7/13/11, 7:15 pm - Little Shul	TBS Board Meeting
Sat	7/16/11, 6pm	Texas Hold 'Em Fundraiser
Tues	8/9/11	Tisha B'Av
Tues	8/30/11 at 6pm, TBS kitchen	Jones-Horton Cooking Class: Stone Fruits
Fri	8/26/11	Preschool Summer Program Ends
Mon- Wed	8/29/11 - 8/31/11	Preschool closed
	Sept 2011	National Preparedness Month
Thurs	9/1/11	Preschool 2011-2012 School Year Starts
Tues	9/13/11 at 6pm, TBS kitchen	Jones-Horton Cooking Class: Breakfasts
Sat	9/24/11	Selichot
Wed	9/28/11	Erev Rosh Ha'Shanah
Thurs	9/29/11	Rosh Ha'Shanah
Fri	9/30/11	Rosh Ha'Shanah
Sat	10/1/11	Shabbat Shuvah
Fri	10/7/11	Kol Nidre
Sat	10/8/11	Yizkor, Yom Kippur
Tues	10/11/11 at 6pm, TBS kitchen	Jones-Horton Cooking Class: Thanksgiving Menu
Thurs	10/13/11	Sukkot
Thurs	10/20/11	Shemini Atzeret, Yizkor
Fri	10/21/11	Simchat Torah
Tues	11/8/11 at 6pm, TBS kitchen	Jones-Horton Cooking Class: Winter Holiday Menus
Tues	12/13/11 at 6pm, TBS kitchen	Jones-Horton Cooking Class: Lucky New Year Menu
Tues	1/10/12 at 6pm, TBS kitchen	Jones-Horton Cooking Class: Winter Squashes
Tues	2/14/12 at 6pm, TBS kitchen	Jones-Horton Cooking Class: 2nd Annual Aphrodisiac menu
Tues	3/13/12 at 6pm, TBS kitchen	Jones-Horton Cooking Class: Sauces



Israel in the Gardens



Come gather to enjoy Israeli music, film, food and to celebrate our Jewish community and Israel's 63rd anniversary.

Sunday, June 5, 2011 - All Day

Yerba Buena Gardens •
4th & Mission, San Francisco
FREE Admission



Temple Beth Sholom Annual Gala



Saturday June 18, 2011 from 6:30 p.m. to 10:30 p.m.

Proceeds to benefit the Remodel Fund

We're going to have an exciting program for your entertainment. Great food, plentiful drinks, fabulous company, nationally known comedian **JOEL CHASNOFF** will perform, a silent auction, and melodious music by our very own famous DJ, Steven Kolden.

This is a great time to celebrate. The first phase of the remodeling will be complete and you'll get a tour of the premises. So many improvements. See how well your money is being invested in our future.

Single ticket prices:

Guardian	\$250 and above
Underwriter	\$100 to \$249
Benefactor	\$51 to \$99
Sponsor	\$50
Friend	\$36

Chai Lights prices:

Your name(s)	\$ 18
¼ page	\$ 50
½ page	\$100
whole page	\$250

Invitations have been mailed. Return the completed reservation form with your payment no later than June 13, 2011.

Thank you.

Temple Beth Sholom and the San Lorenzo Lions Club



invite you to attend a fund raising event:

Texas Hold'em Tournament

Saturday, July 16, 2011
Temple Beth Sholom
642 Dolores Avenue (near Bancroft)
San Leandro



Doors open at 6:30 p.m. Play begins at 7:00

\$36 (in advance) **\$50** (at the door)

Ticket includes \$1,000 in chips, a drink coupon, food, and raffle prizes

For reservations and tickets, call (510) 357-8505



From the Editor

The purpose of the Kol is to inform, educate, entertain congregants, and to attract other Jews to the Temple.

The KOL schedule for the Sept/Oct 2011 edition:

Deadline for submission of all articles will be 8/3/11. Plan ahead. This schedule will take some getting used to but we have successfully faced more difficult challenges.

The Publication Date will be 9/1/11.

The rates for advertising in the KOL SHOLOM are more affordable than ever. See the list below.

The new “**Classified**” section may include an ad for items you want to buy, sell, give away, or trade. You can ask for help or offer your help to others. Wish your friends happy birthday or *mazel tov* for a *simcha*. The Editor retains editorial privilege.



Send me Temple pictures, please.

Rita Cohen

Advertisement Rates in KOL SHOLOM

Size of ad	INDIVIDUALS 1 Edition of KOL SHOLOM	CORPORATE 1 Edition of KOL SHOLOM	INDIVIDUALS 6 Editions of KOL SHOLOM	CORPORATE 6 Editions of KOL SHOLOM
1 row (70 characters) in the “ Classified ” section	\$10	N/A	\$50	N/A
1/8 page (bus card size)	\$20	\$36	\$110	\$200
¼ Page	\$36	\$54	\$200	\$350
½ Page	\$50	\$90	\$250	\$500
Whole Page	\$72	\$180	\$400	\$775

eScrip

There is an extra easy way to add extra financial support to Temple Beth Sholom. It is called “**eScrip**”. Sign up for **eScrip** to benefit our Temple. To register, go to <https://secure.escrip.com/jsp/supporter/registration/step1.jsp>



In the “Search for your group” section, select the “Group Name” button and in the “Search” dialogue box, type in Temple Beth Sholom. Then click on the “Search” button. There are many Temple Beth Sholom listings. Please be sure to select us at 642 Dolores Ave, San Leandro.

Temple Beth Sholom earned \$500 the last fiscal year – how easy was that!! All you have to do is shop and the Temple benefits. Sign up at escrip.com and discover how many of your favorite shopping destinations participate in this fundraiser.



The Temple and Preschool **remodel** is moving forward.

Phase I should be complete **B””H** by mid-June in time for the Gala!!!!!!

So many things have changed at Temple. Here are just the highlights.

In the front –

- ✧ The concrete path has been replaced. A new concrete path has been added through the grassy area.
- ✧ A door to the new library (in the small classroom) has been added for access to the patio.

Inside –

- ✧ A new telephone system has been installed.
- ✧ The restrooms and Judaica Shop have been demolished. The new floor has been laid.
- ✧ The doors separating the preschool have been installed.
- ✧ The doors from Zucker Hall into the backyard have been replaced with ADA-compliant doors.
- ✧ The electricity upgrade is a work in progress. So far light switches and electrical outlets have been installed to give us some flexibility and more power.

Outside –

- ✧ Ramps and handrails have been installed outside the doors leading from Zucker Hall to the backyard.
- ✧ The existing pathway in the backyard has been re-asphalted. A second pathway has been asphalted for the preschool kids to use directly to their new entryway (which isn't ready yet).
- ✧ The parking lot has been re-surfaced and re-lined. An ADA-compliant space has been included near the gate entry.

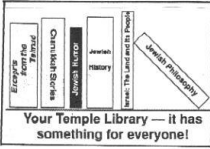
We still have a long way to go before we are finished re-furbishing the Temple. There are lots of decisions to make and the Board thought it would be fun if we had a congregational contest. Here are some things to think about for the end of the year:


Patio:

When we replace the wood fencing and benches, do you want black wrought iron, white wrought iron, wood, or something else? Do you want a bike rack on the patio?

Main building exterior:

What color(s) would you like to paint the Temple?


<p>SLATER MEMORIAL LIBRARY & WEINREB LEARNING CENTER</p>		<p>Contact Eleanor or Dolores if you need a book from the library. See you in the library! Eleanor Tandowsky</p>
---	---	--

	<p style="text-align: center;">Adult Education</p> <p>All classes are taught in the Little Shul, unless otherwise noted.</p> <ul style="list-style-type: none"> ☆ Tuesdays at 9:00 a.m. – The Kuzari ☆ Wednesdays from Noon to 1:30 p.m. – " Canonization - Which Biblical Books Made the Cut " – (bring your lunch) ☆ Wednesdays at 1:30 p.m. Talmud class - "Sanhedrin - Jewish Courts Adjudicating Civil and Capital Laws" ☆ Fridays at 9:00 am – Spinoza [NEW] <p>Join Rabbi Manhoff's classes! See you there!</p>
---	---

How to Donate

For donations made online, please follow the instructions on this web page: <http://www.tbssanleandro.org/donate.html>. For donations made by check, please note the designated fund in the memo portion of your check, and the message you wish to accompany your donation.

- **General** - For Temple operations.
- **Rabbi's Tzedakah** - Enables Rabbi to meet the needs of personal & organizational requests.
- **Library** - Purchase new materials.
- **Marvin Weinreb** - Enhance Jewish Education.
- **Friends of Torah School** - Purchase educational supplies.
- **Zucker Memorial** - Provides for an annual lecture.
- **Cantor's Music** - Enrichment of musical programming.
- **Prayer Book** - Appropriately inscribed bookplate is included in prayer book.
- **Al Mooney (Little Shul)** - Refurbishment and ongoing maintenance.
- **Adult Education** - To facilitate delivery of Adult Education.
- **Sam & Ann Schoenfeld Book Repair** - Repairing and preserving our books & bibles.
- **Jacob & Lena Ponsky** - for the participation of families in dinners; programs for learning about Jewish heritage.
- **Sisterhood** – Kitchen equipment, onegs, catering equipment, beautify Temple (Mail directly to Sisterhood).
- **Sam Weiss** - Beautification of TBS landscaping.
- **Rena Slavsky Holocaust** - Support programs.
- **Al Maisler Torah** - Repair Torah
- **Capital Campaign** – Building Maintenance and Improvement

	<p style="text-align: center;">San Lorenzo Lions Club</p> <p>The Lions Club is collecting old eyeglasses. They have a collection box in the Temple lobby. Bring your old eyeglasses to the Temple anytime and deposit them for collection. Thank you.</p>
---	--

DONATIONS***Thank You for your generosity to the Temple***

Description	To	Message	From
General Fund		Donation from Mitzvah Day	Sisterhood
		In honor of our daughter Alexandra's 11 th Birthday	Celia Benavides & Silvino Segura Jr.
		In memory of Martha Heilborn	Inge Heilborn
		In memory of Werner Goldman	Inge Heilborn
		In memory of Isadore Wolk	Stuart & Theresa Wolk
		In memory of Bertha Shefshick	Bruce Shefshick
		In memory of Beatrice Ostroff	Paul M. Ostroff
		In memory of my Father	Ellen Levine
	B.J. Borris & Arlene Hazelkorn	Mazel Tov on your 25 th anniversary	Eleanor Tandowsky
		In appreciation	Vladimir Metrikin
	Heidi Kolden	In honor of Heidi's Challah at Gavri's Bar Mitzvah	Sophie Miron
	Rebecca Barzell-Weber	In honor of Rebecca giving Gavri a haircut for his Bar Mitzvah	Sophie Miron
	Simon & Henrietta Reichenberg	Our deepest condolence on the passing of your niece Kati Mulerova	Stephanie & Otto Jagoda
Cantor's Music Fund		To honor the memory of my beloved husband, Bernard Siegel, with whom I shared a lifetime of beautiful music together. This donation is in support of the Zimriyah Music Festival.	Loretta Siegel
		In support of the Zimriyah Music Festival	Sam Mesnick & Ilene Weinreb
	B.J. Borris & Arlene Hazelkorn		In support of the Zimriyah Music Festival
		In memory of my mother's yahrzeit, Clara Levine, MD	Ellen Levine, MD


DONATIONS***Thank You for your generosity to the Temple***

Adult Education	Mimi & Marvin Zinn	In honor of your 65 th wedding Anniversary	Nissan & Carol Saidian
Rabbi Tzedakah Fund		In appreciation	J.P. & Febra Popoff
		In appreciation	Sam Mesnick
		In honor of his 60 th Birthday	Bruce Shefshick
		Thank you for the unveiling in memory of Irving Schoenfeld	Larry & Marlene Fingerut
Ponsky Fund	Milt & Gerry Toorans	Congratulations to your daughter-in-law, Joanne Kraus, on the successful surgery	Love, Otto & Stephanie Jagoda
	Joanne Kraus	Wishing you a speedy recovery	Mom & Milt
	Gerry & Milt Toorans	In memory of Edward Kraus	Burton & Edythe Heda
	B.J. Borris & Arlene Hazelkorn	In honor of your 25 th anniversary - We wish them mazel tov and many more years of simchas & good health	Stan, Sergio, Anita, Alan, Regina, Gene & Hilary Osofsky
		In loving memory of Samuel & Pearl Toorans, parents of Milt Toorans	Milt & Gerry Toorans
		In loving memory of Jerome Jay Toorans, son of Milt Toorans	Milt & Gerry Toorans
		In loving memory of Jacob & Lena Ponsky, parents of Gerry Toorans	Milt & Gerry Toorans
		In loving memory of Ed Kraus, son of Gerry Toorans	Milt & Gerry Toorans
	Milt & Gerry Toorans	Congratulations on the 1st birthday of their Great Grandchild, Aaron Edward Kraus	Stephanie & Otto Jagoda
Remodel Fund (Capital Campaign)		In gratitude for a successful recovery	Rachel Sanders
		In memory of Arthur Bolter	Irv & Ursula Batz
Sam Weiss Fund	B.J. Borris & Arlene Hazelkorn	In honor of your 25 th anniversary	Fran Herts

Tree of Life Leaf Order Form

Tree of Life Leaf

A Great Way to Commemorate any Life Cycle Event




Name _____
 Address _____
 Phone Number (____) _____

Number of Leaves @ \$180 each _____
 Amount of Check (Made payable to Temple Beth Sholom)
 \$ _____

Order for Leaf

Please print your inscription clearly below. Space is limited to 4 lines, with a maximum of 28 letters and spaces per line.

LITTLE SHUL MEMORIAL BOARD ORDER FORM



“May Their Memory Be a Blessing”

The donation amount:

(a) Moving current plaques from the main sanctuary to the Little Shul (for those who want it to be done) cost \$72. The plaque and engraving will be without charge unless a larger plaque is preferred.

(b) New regular-sized rectangular plaques are \$360.

(c) New large-size square plaques are \$540.

Yahrzeits will be marked with polished stones. Plaques are clear Lucite.

Your Name _____
 Address _____
 Phone Number (____) _____
 Amount of Check (Made payable to Temple Beth Sholom) \$ _____

This is an elegant and modern way to remember our loved ones.

Plaque Order

___ Move plaque for (loved one’s name) from main sanctuary to Little Shul. Same size.
 ___ Move plaque for (loved one’s name) from main sanctuary to Little Shul. Larger size.
 ___ New rectangle plaque.
 ___ New square plaque.

For new orders, please print your inscription clearly below. Space is limited to 4 lines, with a maximum of 28 letters and spaces per line.

Oneg Sponsorship



The Temple needs your help with the Friday evening Oneg Shabbat following our worship service. If you have questions, or would like to volunteer, please contact Heidi Kolden (510.693.1385) or Rita Cohen rc3429@aol.com. Thank you for your participation.

Our goal, as a community, is for every family unit to sponsor at least one oneg per year. Being a successful community takes a commitment from everyone to do their part. The oneg can be modest or extravagant – depending on the sponsor. Whatever you choose to do is wonderful and gratefully enjoyed by the Congregation. It can be dairy, vegetarian, vegan, or even meat (for example you want to serve chopped liver – yum). We usually don't have meat onegs, though, as these clash with our dessert selections which are very important to us.....

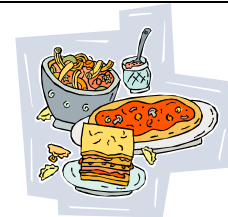
Families can also get together to divide up the chores: Provide challah; bring refreshments (i.e., fruit, baked goods, and beverage); plate refreshments; set tables, prepare ritual items; clean up, and prepare Shabbat morning oneg. This is a fun way to build community and lasting friendships.

We usually have 35-50 congregants at worship services on Friday evening. Sisterhood provides the paper dessert plates, paper napkins, plastic knives, forks, and spoons, paper cold cups, paper hot cups, serving utensils and platters, kiddush cups, kosher wine, and grape juice. Sisterhood will open the appropriate kitchen cabinets on Friday late afternoon and re-lock them following the Shabbat morning oneg. The usual "oneg arrangement" is 4 round tables with 8 chairs around each and 3 rectangle tables set up in the by 4:00 pm on Friday afternoon.

Please choose a date to sponsor an oneg and let Heidi Kolden know which date works best for you. Thank you to Heidi Kolden, Roz Weiss, Fran Herts, and JP & Febra Popoff for sponsoring recent onegs.

First Friday Night Shabbat Service and Dinner

We also need your sponsorship of these special dinners. The meal is usually child-friendly and dairy or pareve. For instance the entrée could be pasta with marinara sauce or lasagna. If you have questions, or would like to volunteer, please contact Heidi Kolden (510.693.1385). Thank you for your participation.



The child-friendly worship service begins at 6:30 pm followed by dinner and oneg at 7:15 p.m. Cost is \$10 for adults, \$5 for kids aged 6 to 13, kids under 5, free!

Please choose a date to sponsor dinner and let Heidi Kolden know which date works best for you.

Thank you on behalf of the Congregation



An excerpt from the Thank You letter from the Jewish National Fund

To Temple Beth Sholom

Dear Rabbi Manhoff

We gratefully acknowledge your generous gift of \$288 on June 14, 2010.

For more than 100 years, Jewish National Fund has been developing and caring for the land of Israel. Throughout this time, JNF has planted more than 240 million trees in Israel, creating lush, green forests in what used to be barren land. This precious green space allows all Israelis to enjoy time outdoors with their families away from the stress of daily life. For the past decade, JNF has also focused its efforts on developing the water resources of Israel. To date, JNF has built more than 200 water reservoirs and dams, which provide life-giving water to more than 1.2 million Israelis. JNF has also been constructing security roads along Israel's northern border with Lebanon, so that children and their parents can travel safely to school and to work out of harm's way. Your continued commitment to JNF allows us to focus on these and other essential projects throughout Israel.

Thank you for your generosity and continued commitment to JNF. Your support makes you a valued partner with the people and the land of Israel.

JNF. For Israel, Forever.

Sincerely,

*Ruth Solomon
Director, Donor Relations*

A Thank You letter from the Reutlinger Community for Jewish Living

To TBS Sisterhood

Dear Rita,

Thank you so much for the cards and other items you donated [from the Judaica Shop] to our gift shop at RCJL.

We appreciate all donations and will put our Temple's generous contribution to good use.

*Fondly,
Vivian Phillips*

A Thank You letter from Building Futures with Women & Children

To Temple Beth Sholom

Dear Rita

Building Futures with Women & Children gratefully acknowledges your generous donation of toiletries. Thank you for your generosity.

*A. Ratto
Staff*

*Tentative Schedule of High Holy Day Services
Sept 2011- Oct 2011 (25 Elul – 10 Tishri)*

<i>Saturday, September 24, 2011</i>	<i>Selichot Program at 8:00pm Selichot Worship at 10:00pm</i>
<i>Wednesday, September 28, 2011</i>	<i>Erev Rosh HaShanah at 8:00pm</i>
<i>Thursday, September 29, 2011 First Day Rosh HaShanah</i>	<i>Morning Service at 9:00am Children's Services in the Little Shul at 10:30am Manhoff New Year Reception In the Back Yard at 1:00pm Tashlich at Lake Chabot at 3:00pm</i>
<i>Friday, September 30, 2011 Second Day Rosh HaShanah</i>	<i>Morning Service Held In the Little Shul at 9:00am</i>
<i>Friday, October 7, 2011</i>	<i>Kol Nidre at 8:00 pm</i>
<i>Saturday, September 8, 2011 Yom Kippur</i>	<i>Morning Service at 9:00 am Children's Services in the Little Shul at 10:30am Afternoon Workshop at 1:30-4:00 pm Yizkor at 4:00 pm Mincha at 5:00 pm Neilah at 7:00 pm Break-the-Fast In the Back Yard at Sundown</i>

=====
Temple Office Hours: Monday-Friday 9am to 3pm
Phone 510.357.8505 Fax 510.357.1375

From
Temple Beth Sholom
642 Dolores Avenue
San Leandro, CA 94577
www.tbssanleandro.org